



Project Organisation 1

Peter J. A. Reusch

TOC

1. Some pictures to explain issues of project organization with respect to size, complexity, and duration
2. Project Organization according to PMBOK
3. Project Organization in SME companies



Result of a project





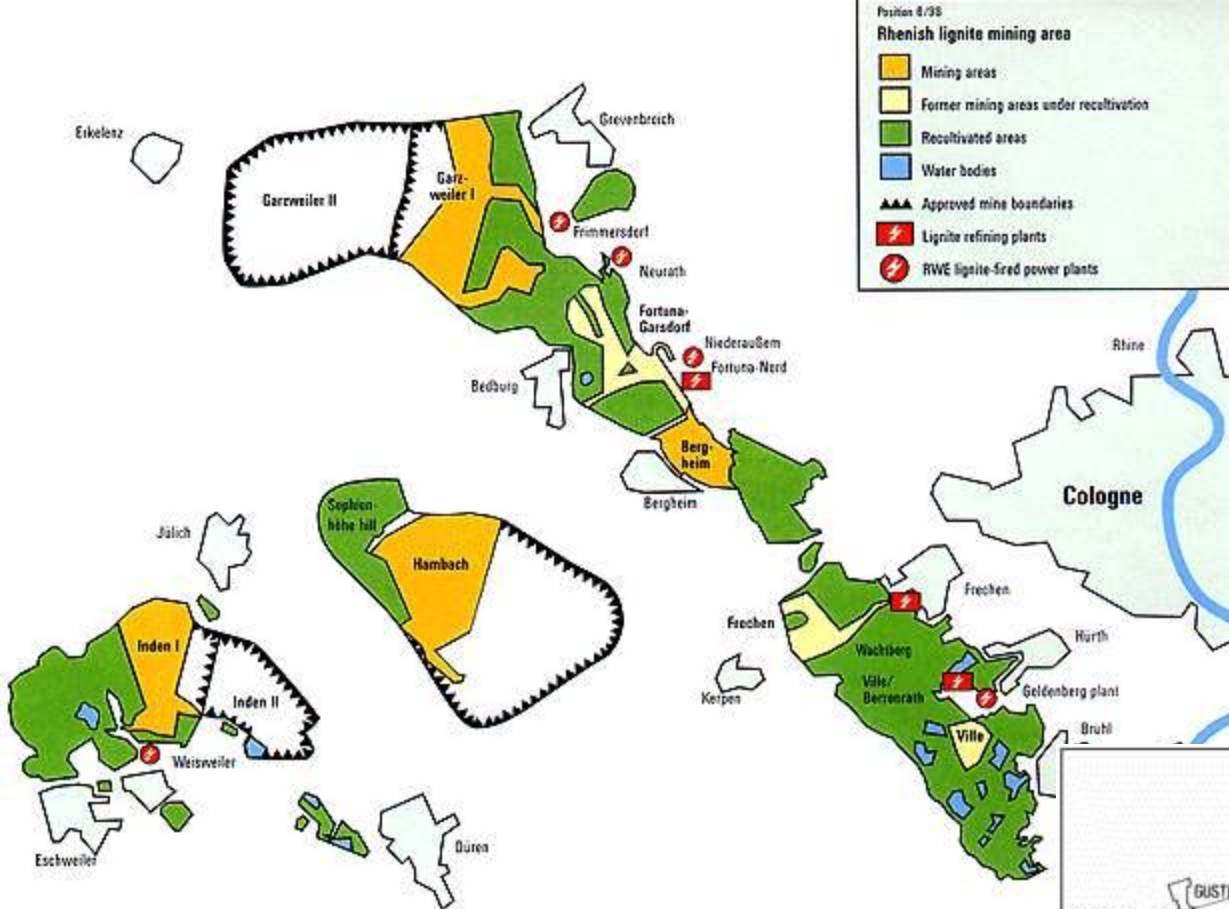
Power station - Neurath



Coal Mine - Garzweiler I

Result of a project

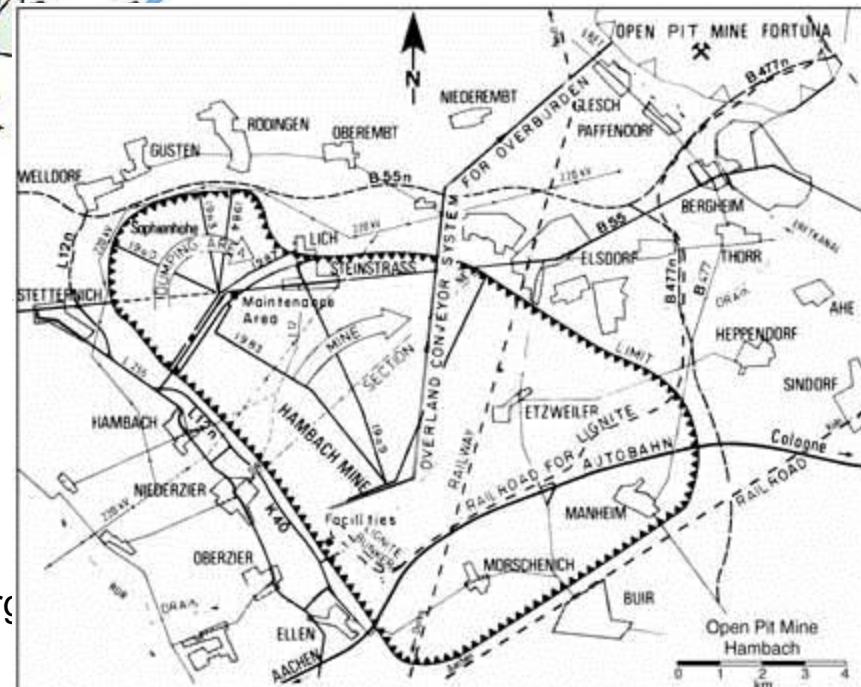




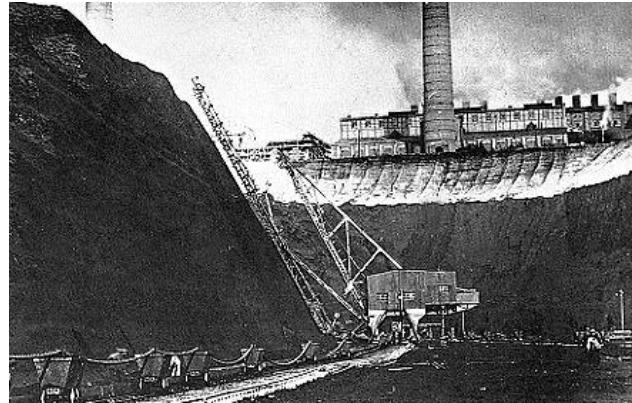
Result of projects

Brown Coal Field in Germany

- Close to Cologne



EuroMPM Project Org



Coal mine and Recultivation



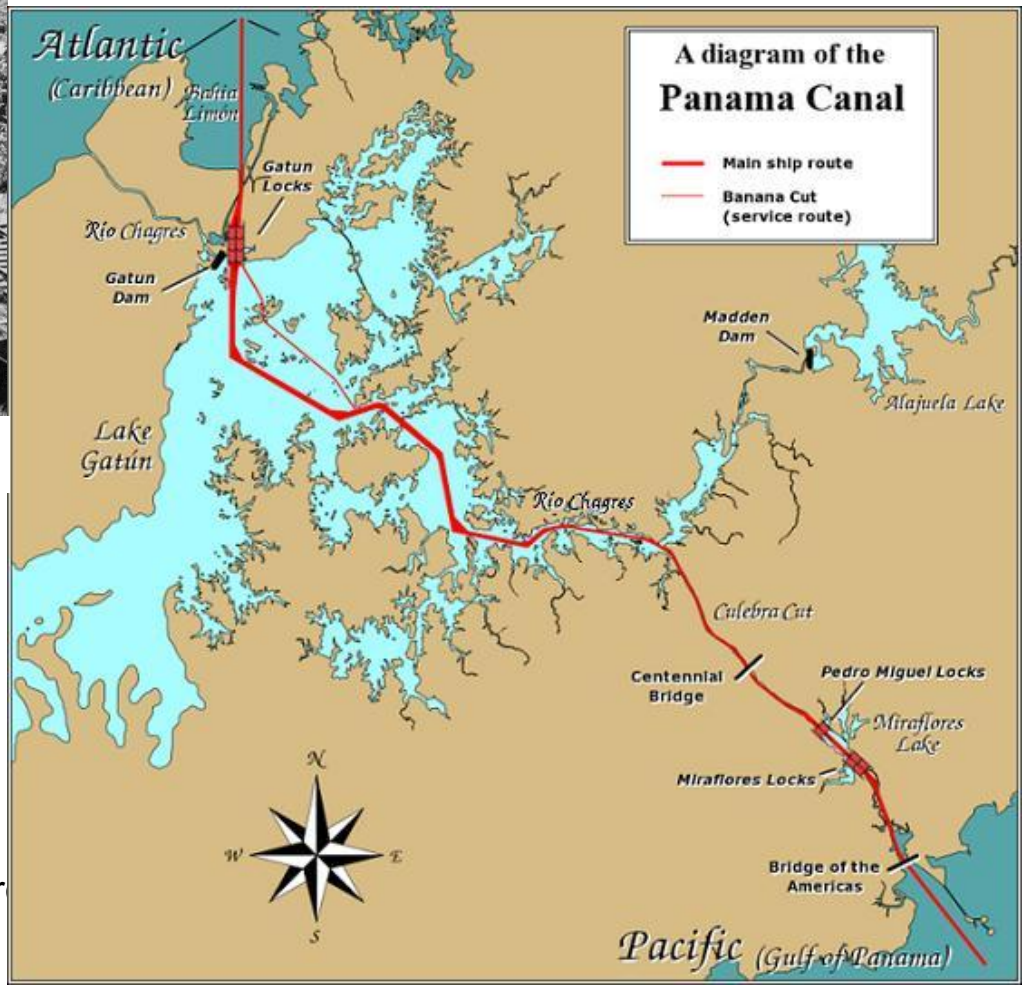
Heider Bergsee Brühl

Result of a project



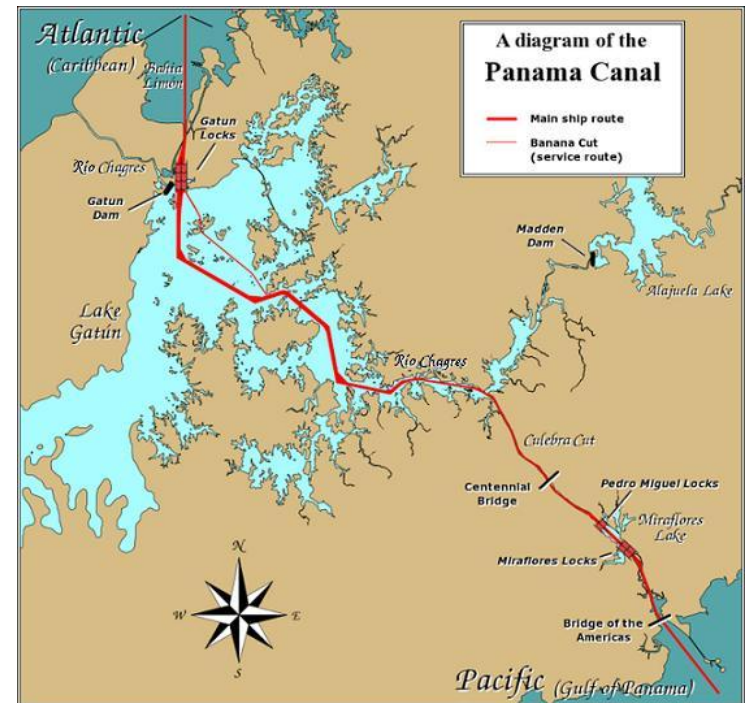


Result of a project





Result of a project





Result of a project





A Guide to the
Project Management
Body of Knowledge
Third Edition

(PMBOK[®] Guide)

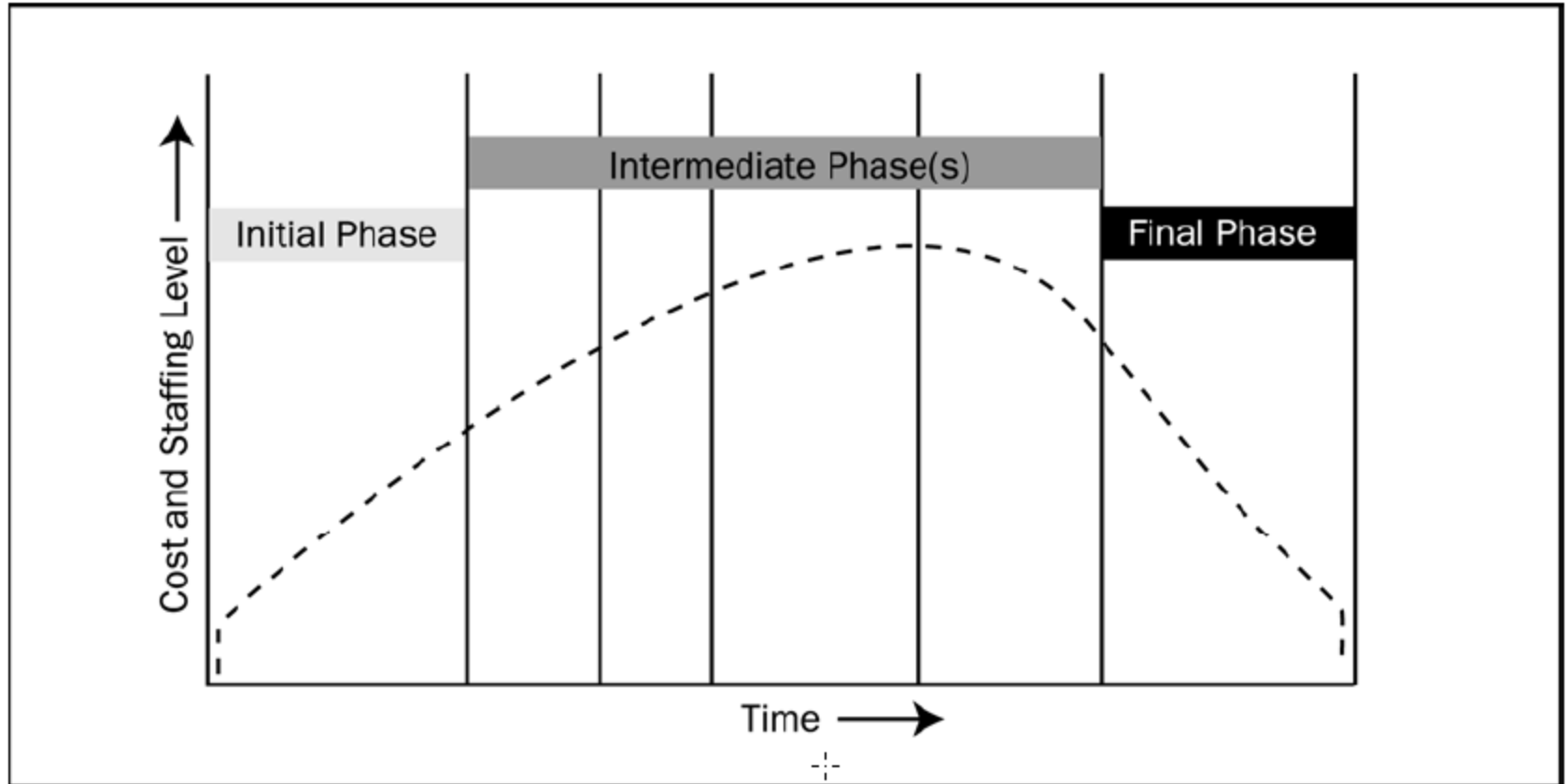


Figure 2-1. Typical Project Cost and Staffing Level Across the Project Life Cycle

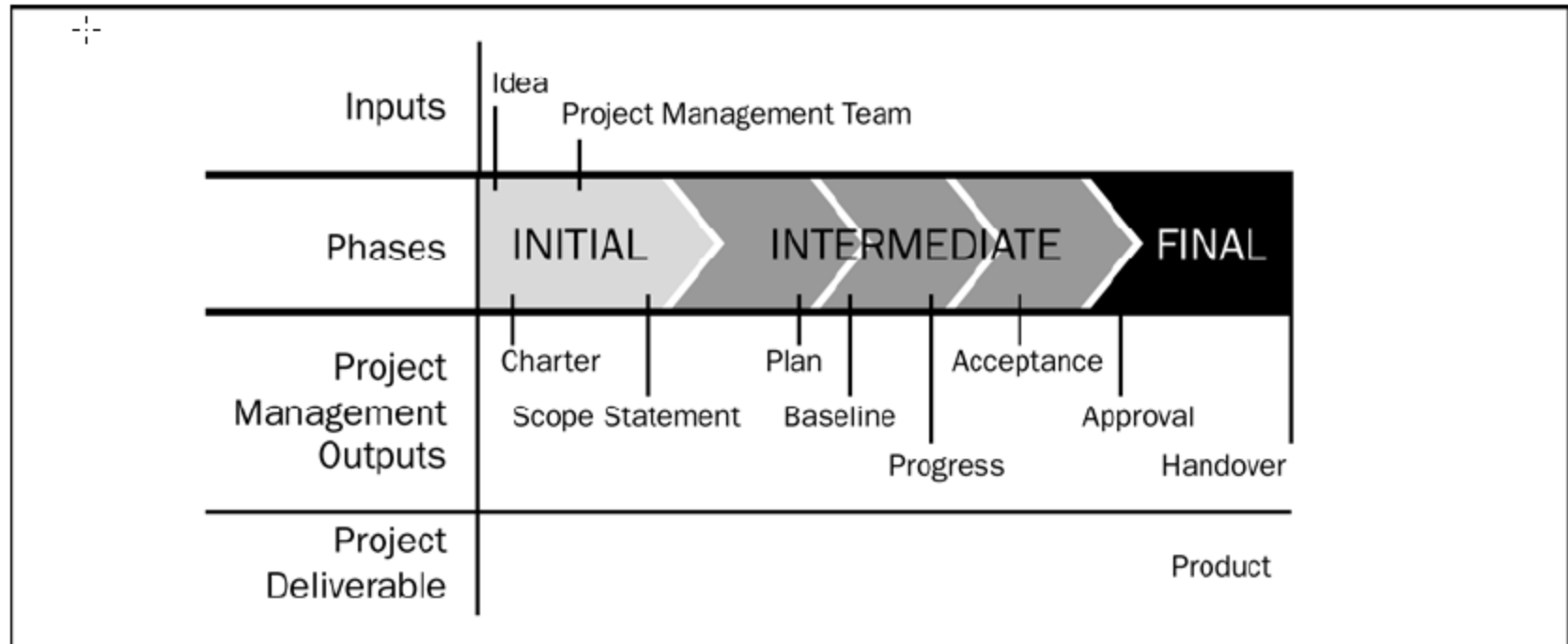


Figure 2-3. Typical Sequence of Phases in a Project Life Cycle

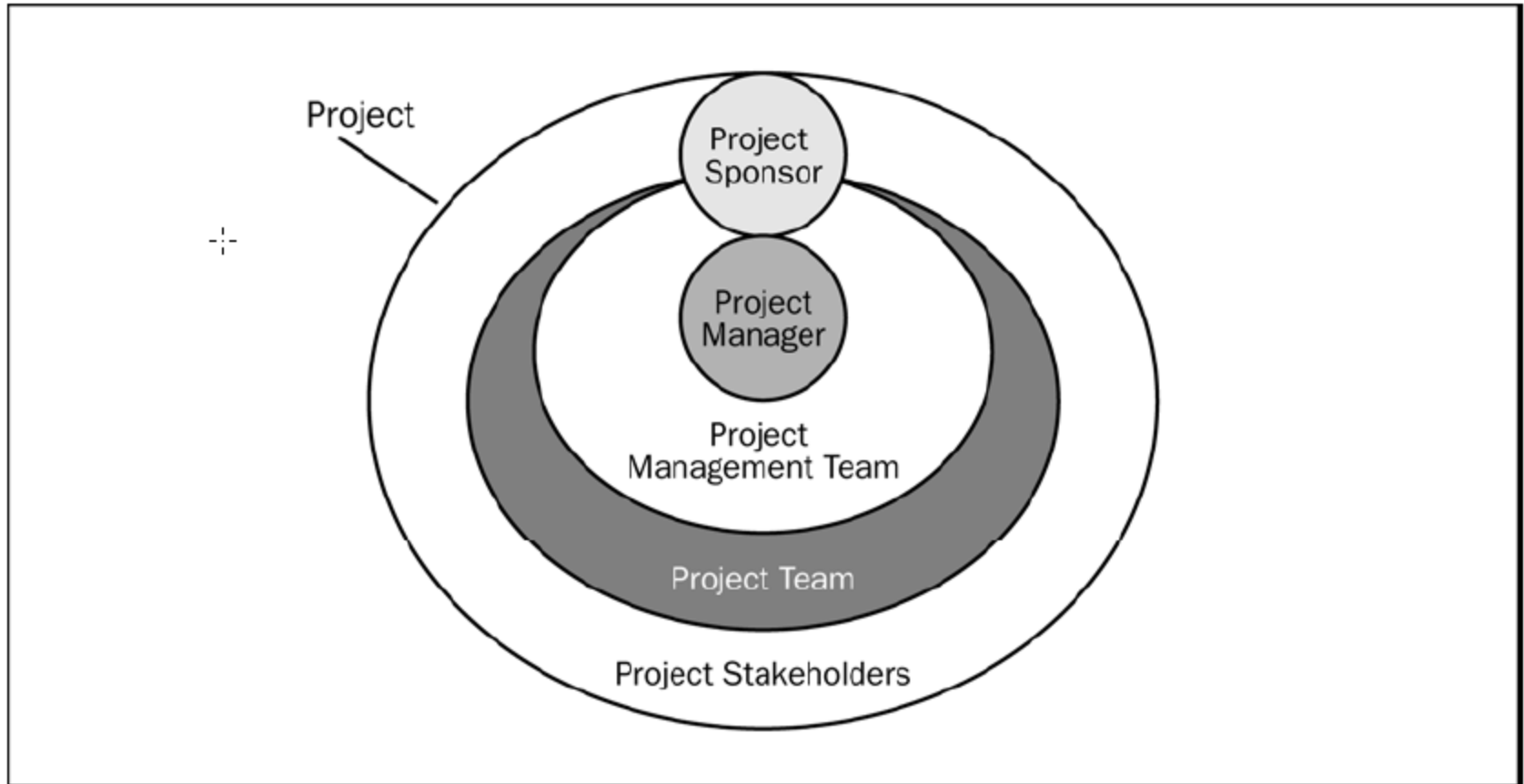


Figure 2-5. The Relationship Between Stakeholders and the Project

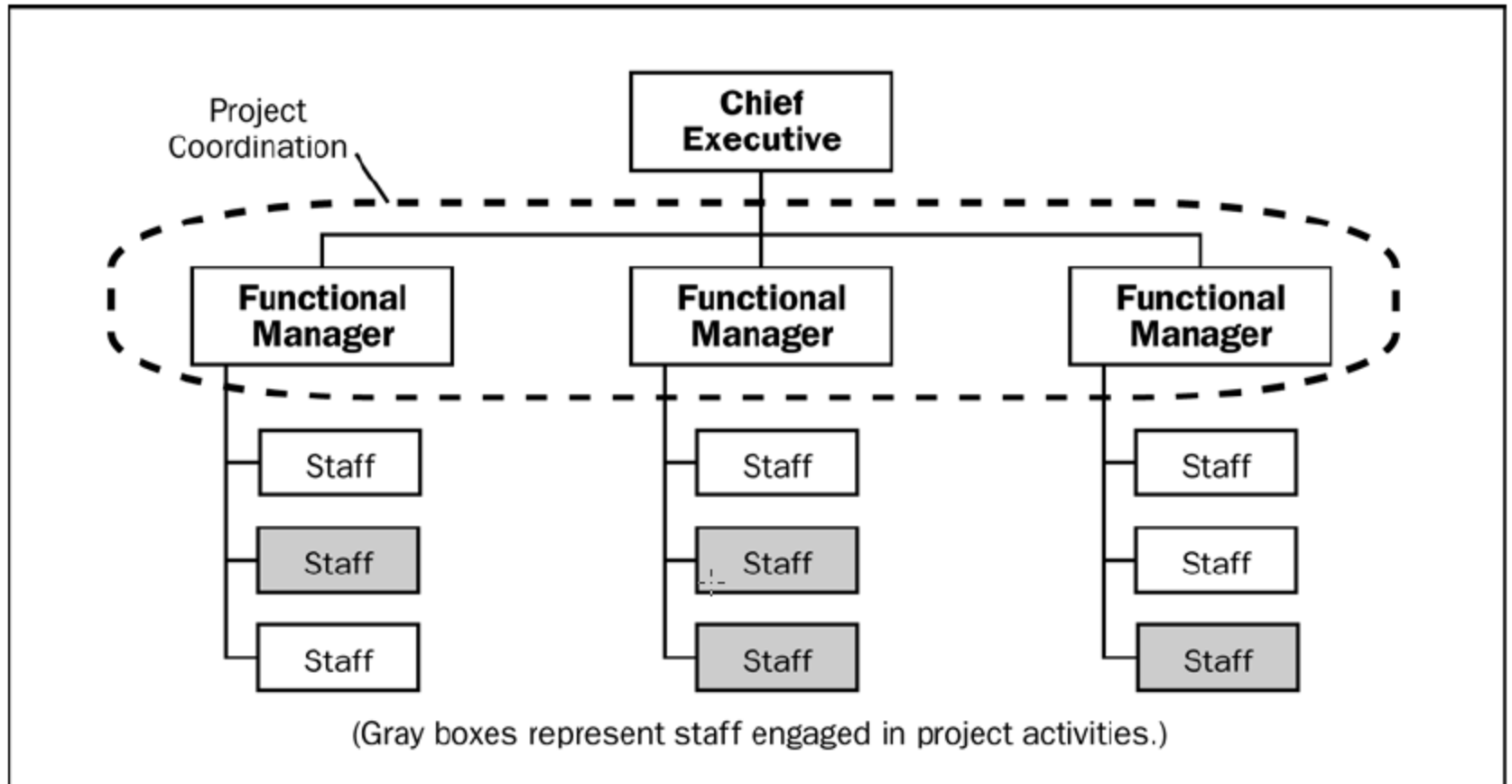


Figure 2-7. Functional Organization

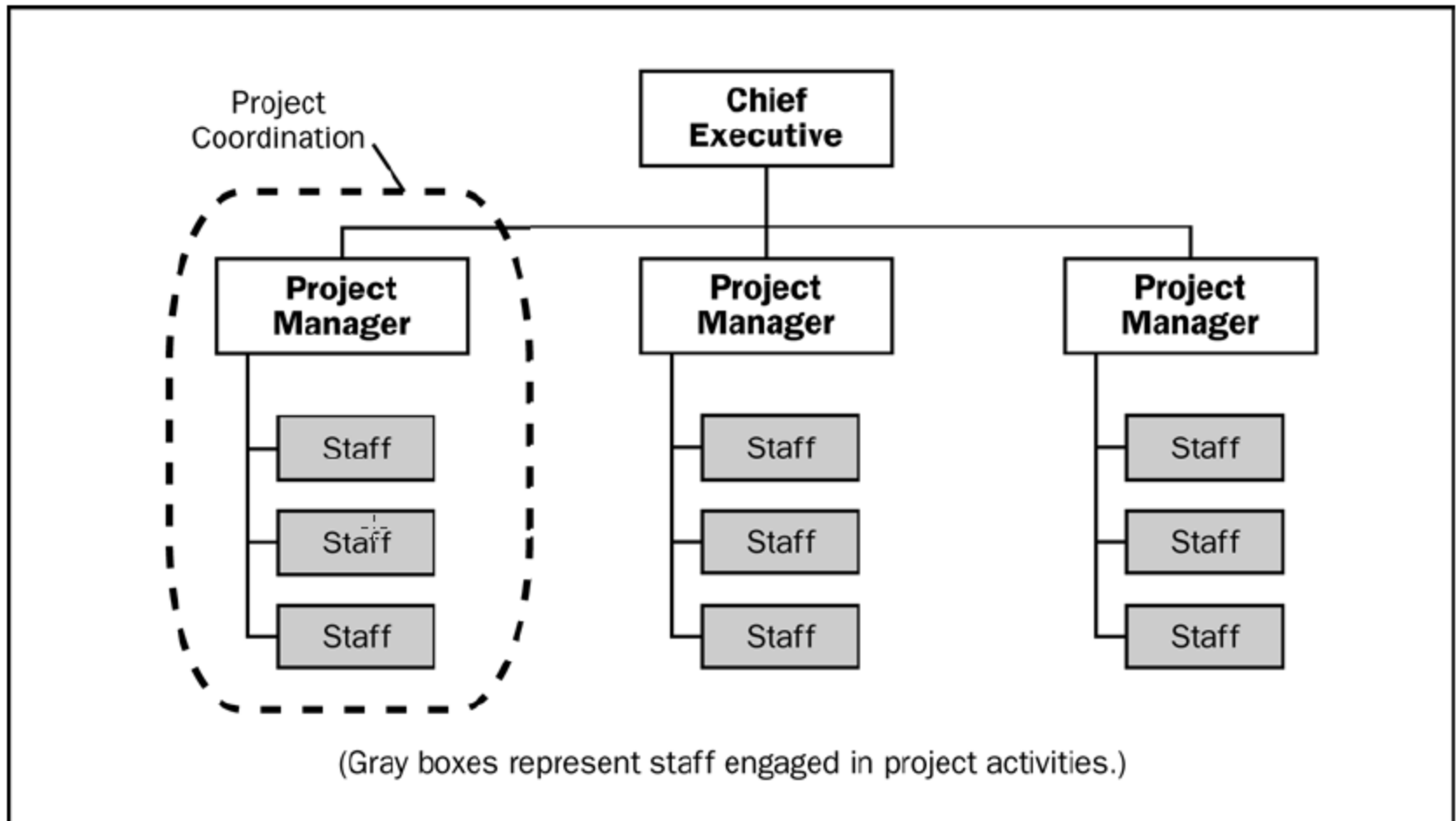


Figure 2-8. Projectized Organization

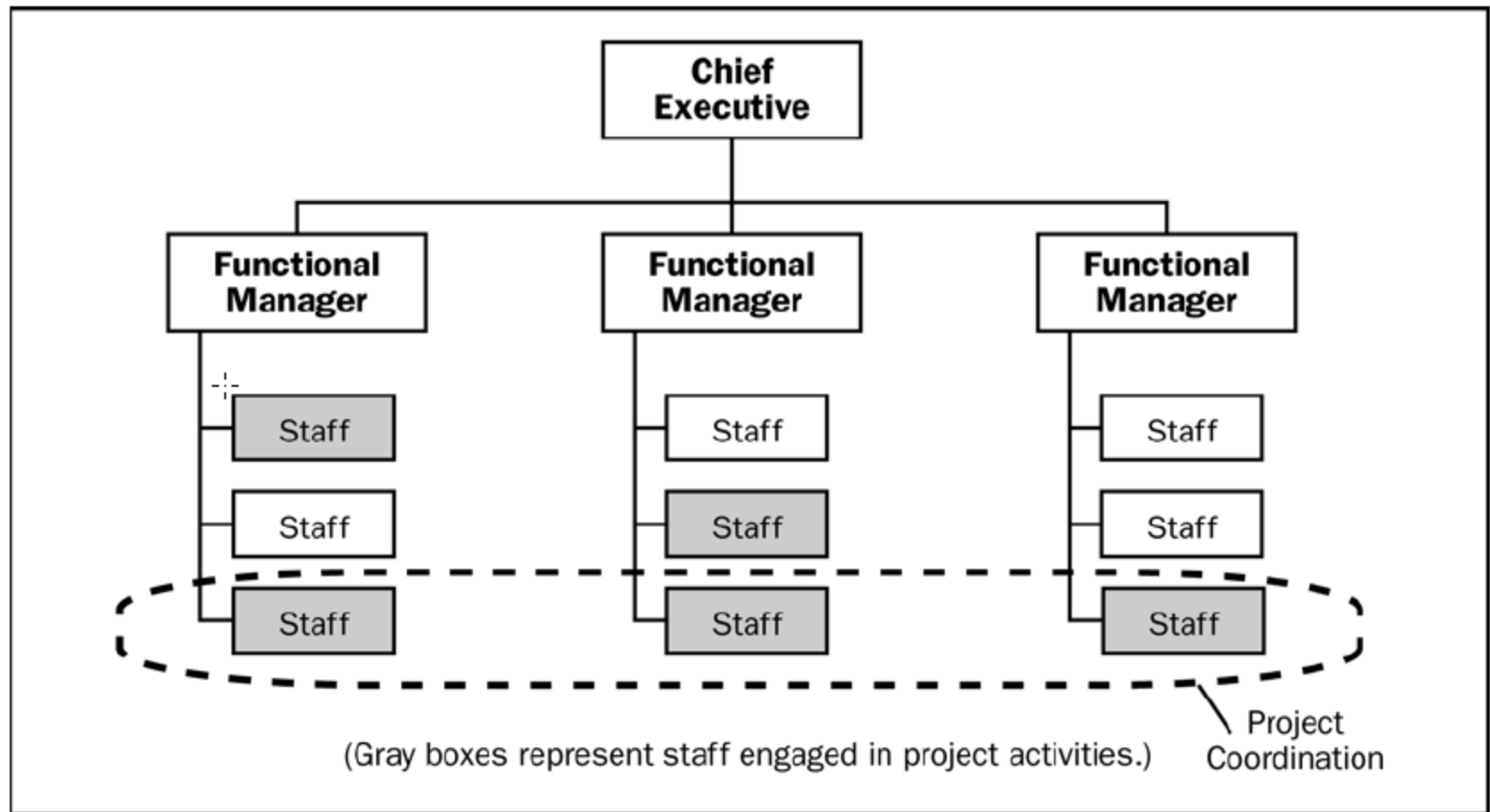


Figure 2-9. Weak Matrix Organization

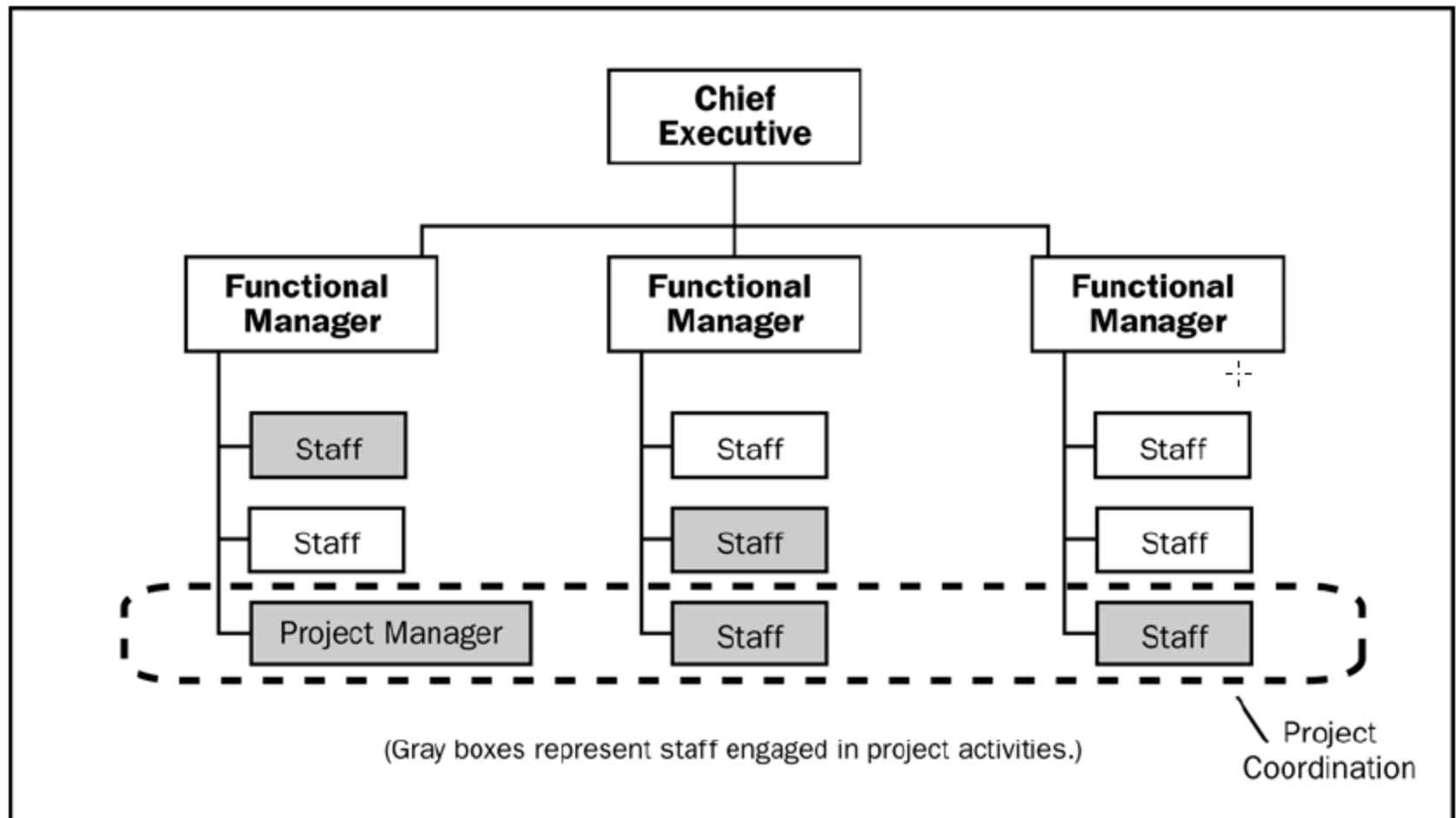


Figure 2-10. Balanced Matrix Organization

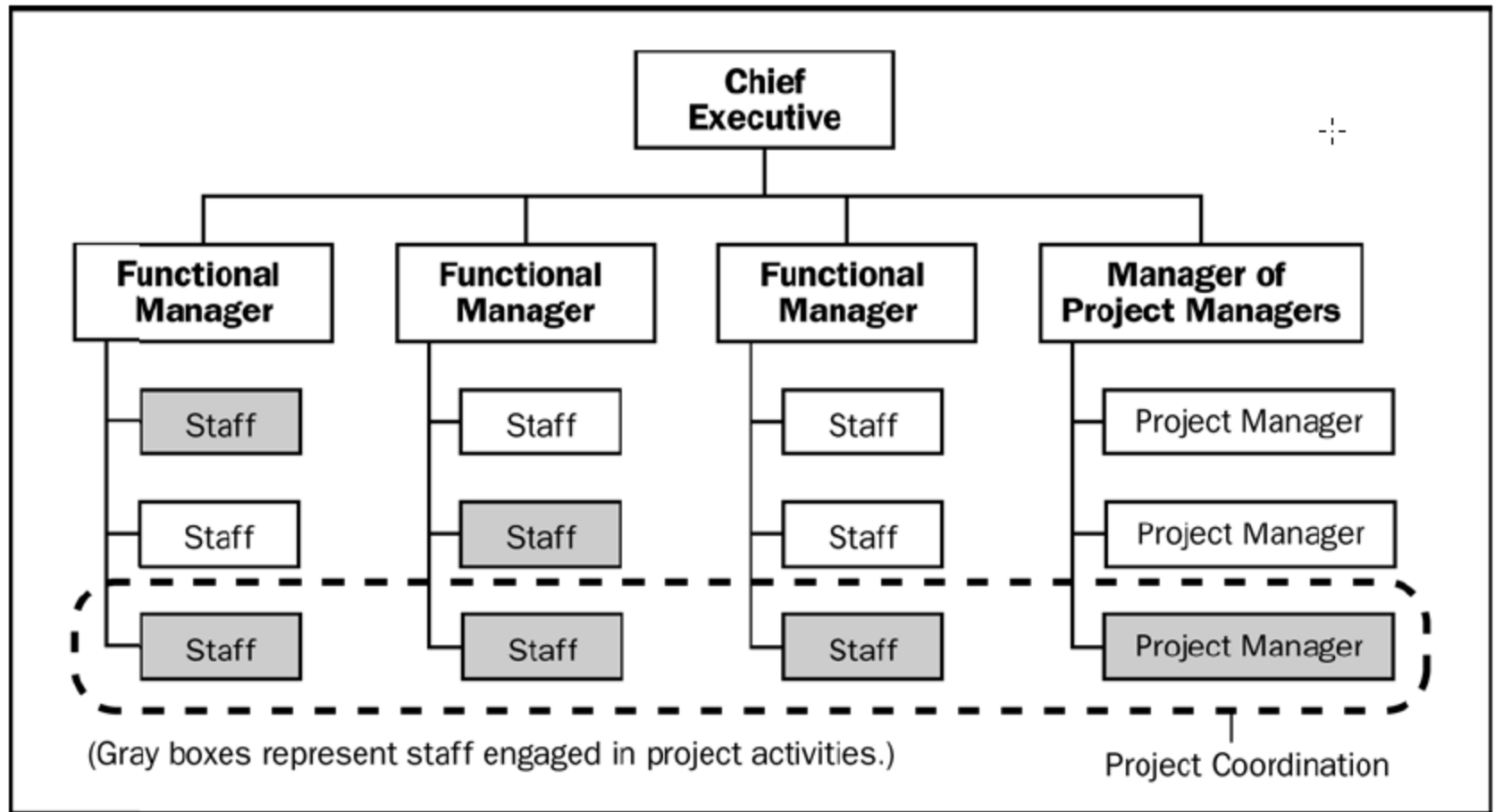


Figure 2-11. Strong Matrix Organization

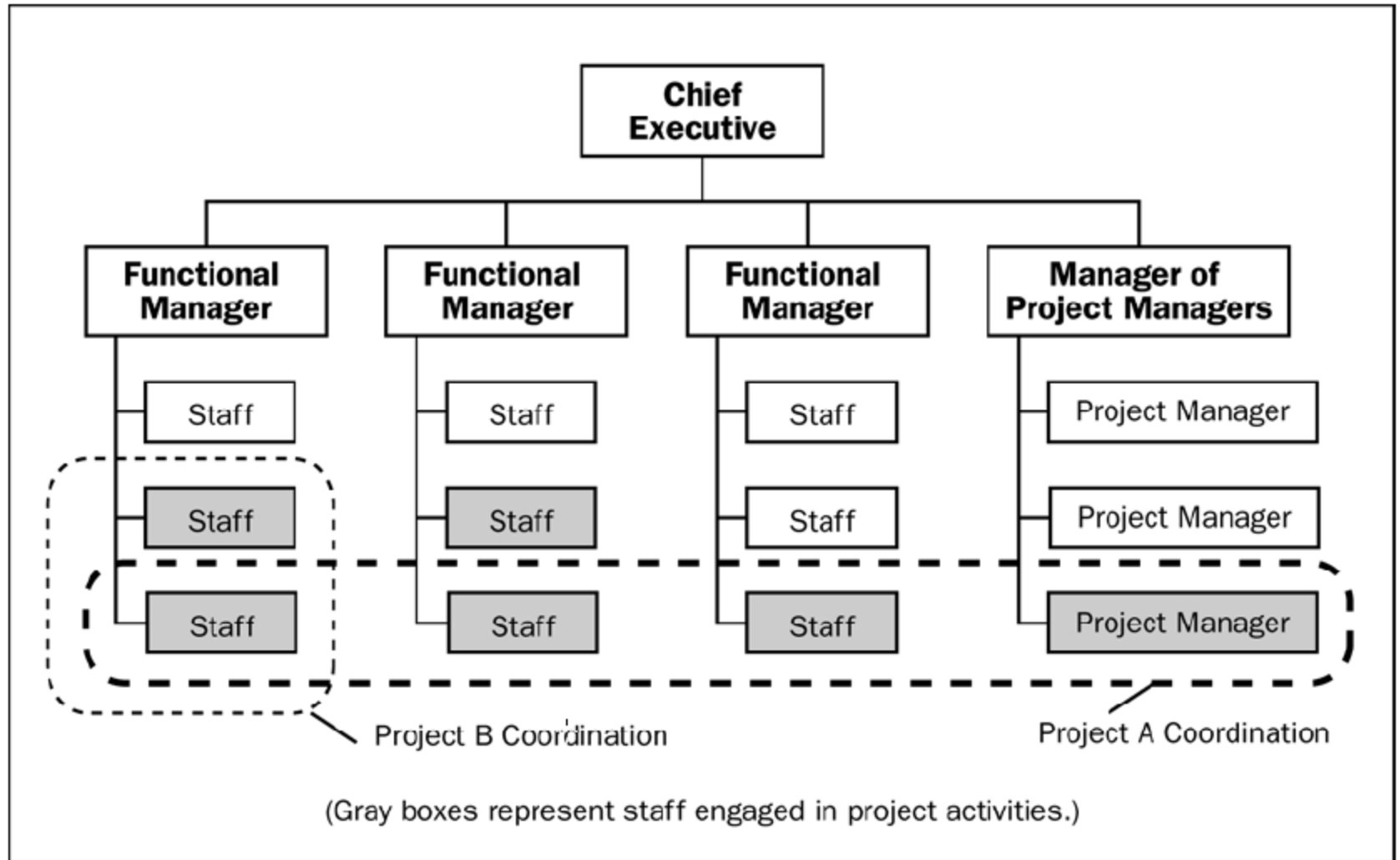


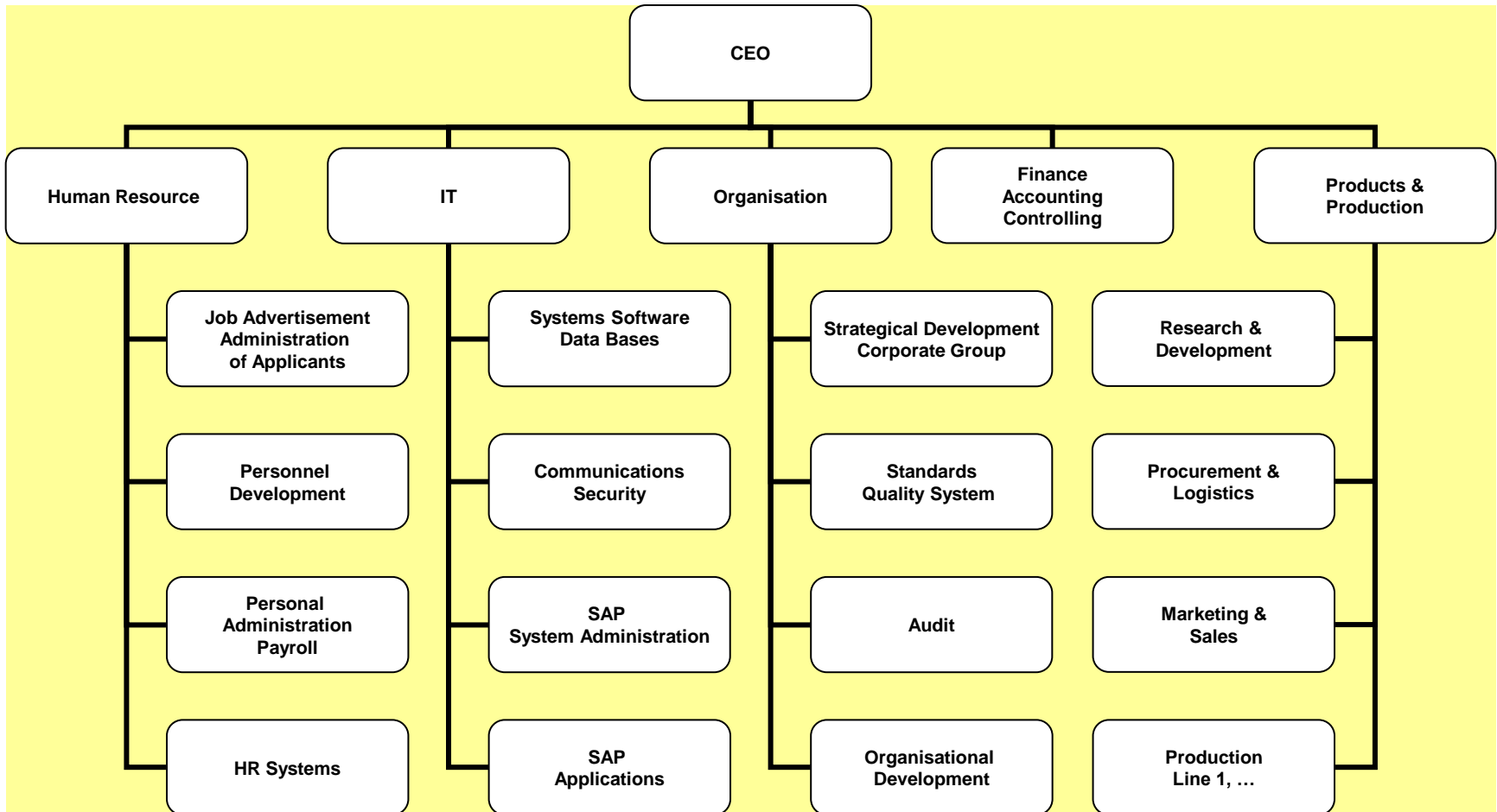
Figure 2-12. Composite Organization



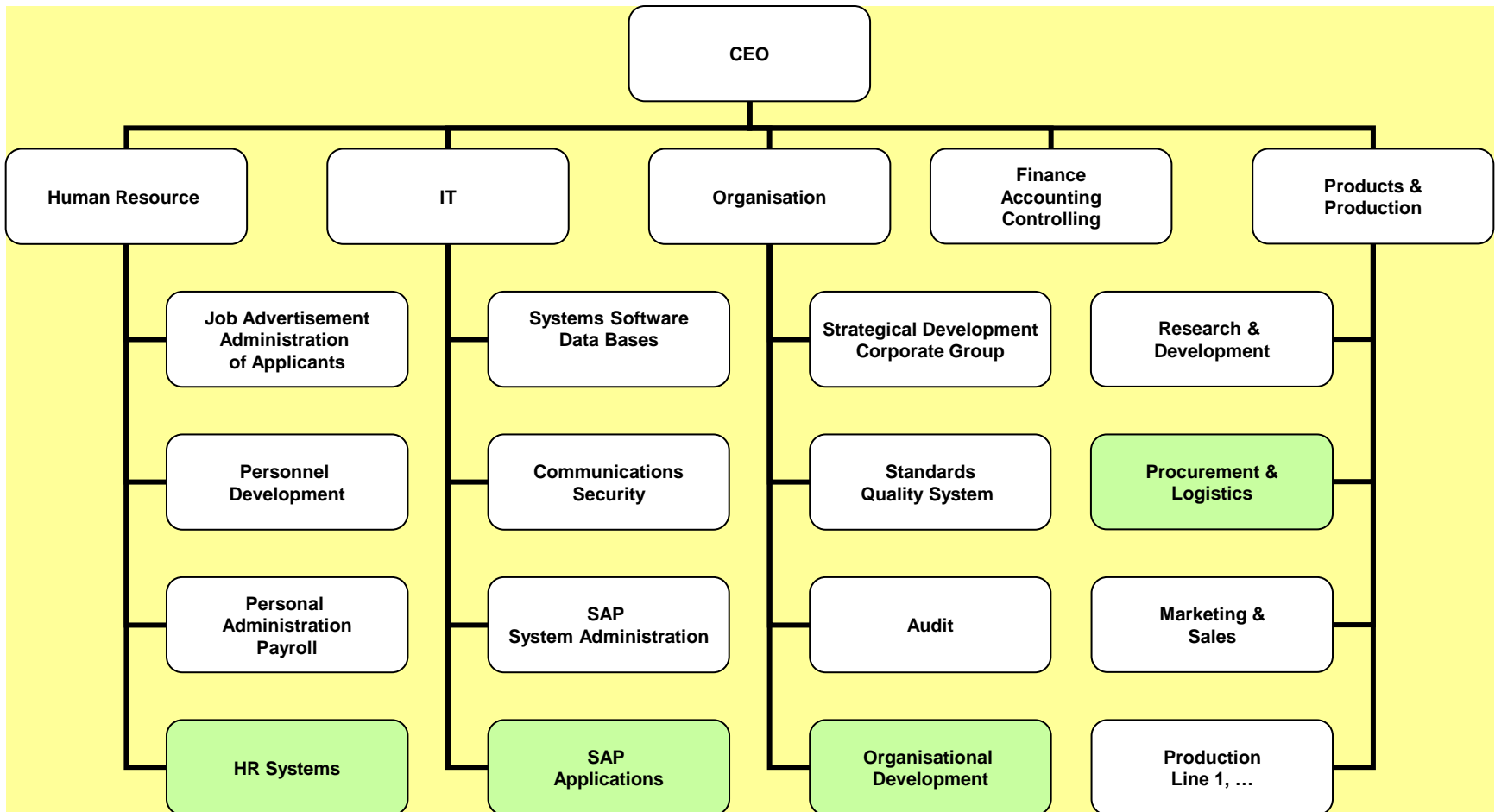
Organization Structure Project Characteristics	Functional	Matrix			Projectized
		Weak Matrix	Balanced Matrix	Strong Matrix	
Project Manager's Authority	Little or None	Limited	Low to Moderate	Moderate to High	High to Almost Total
Resource Availability	Little or None	Limited	Low to Moderate	Moderate to High	High to Almost Total
Who controls the project budget	Functional Manager	Functional Manager	Mixed	Project Manager	Project Manager
Project Manager's Role	Part-time	Part-time	Full-time	Full-time	Full-time
Project Management Administrative Staff	Part-time	Part-time	Part-time	Full-time	Full-time

Figure 2-6. Organizational Structure Influences on Projects

Company ABC

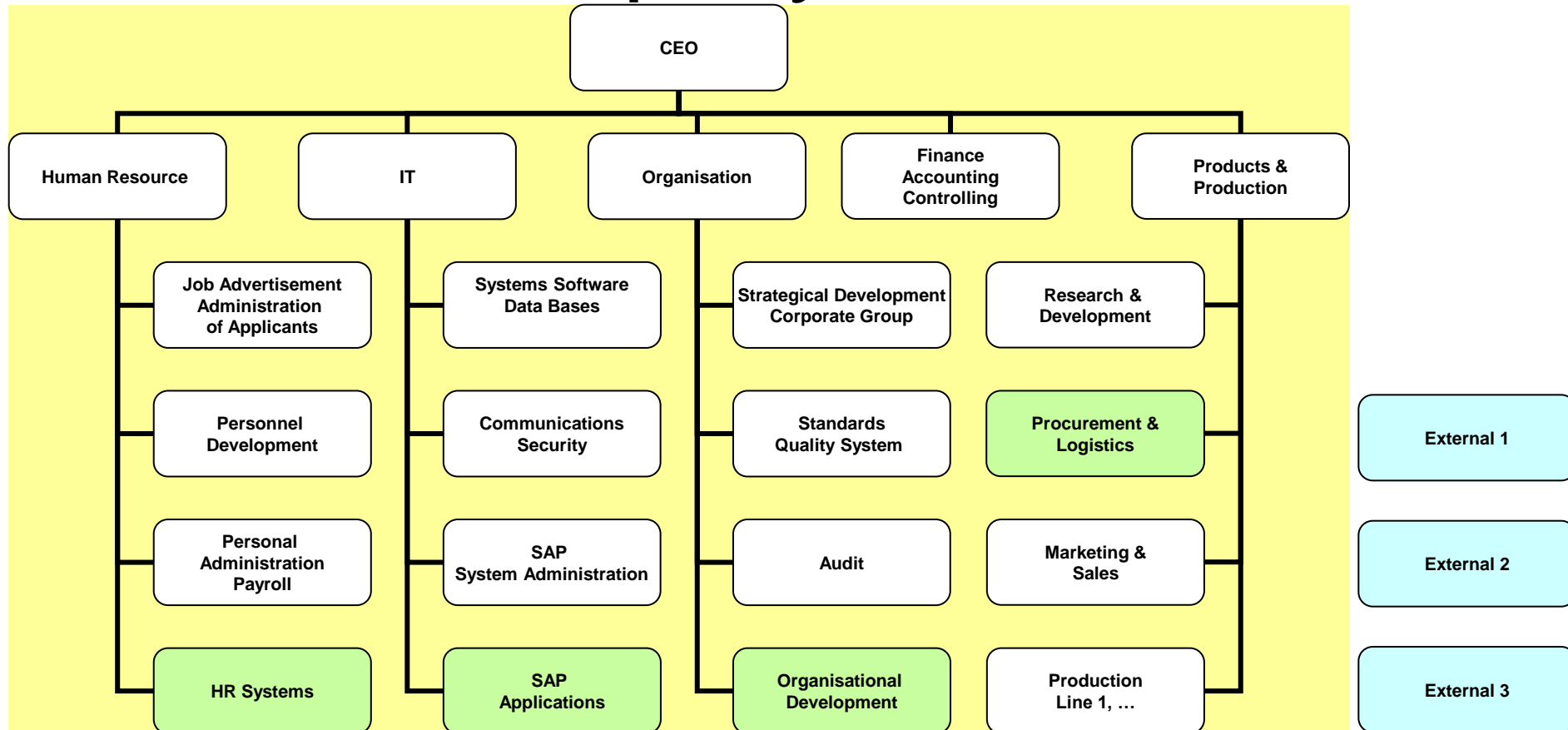


Company ABC



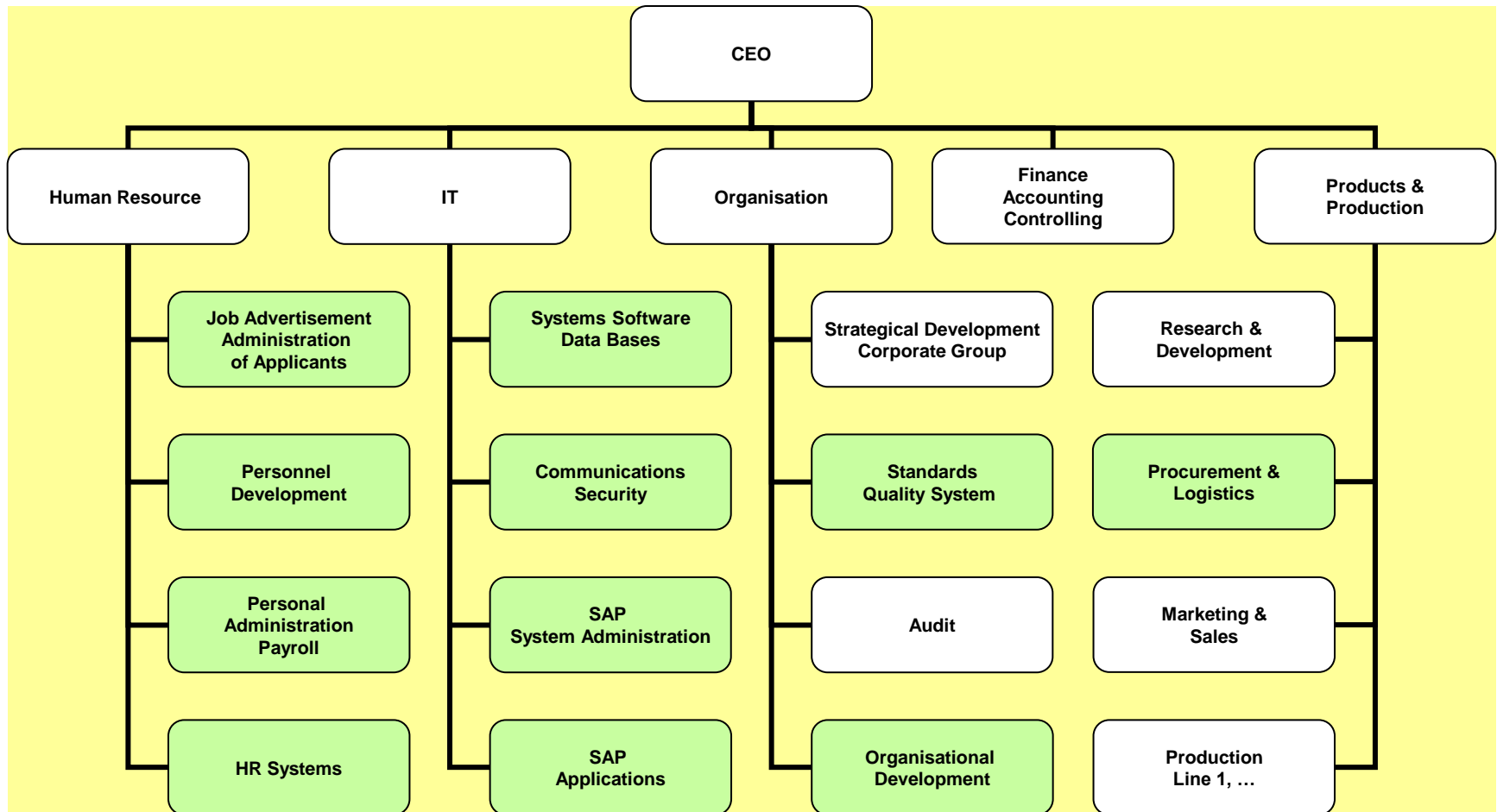
Core crew for the implementation of SAP HR Applications

Company ABC



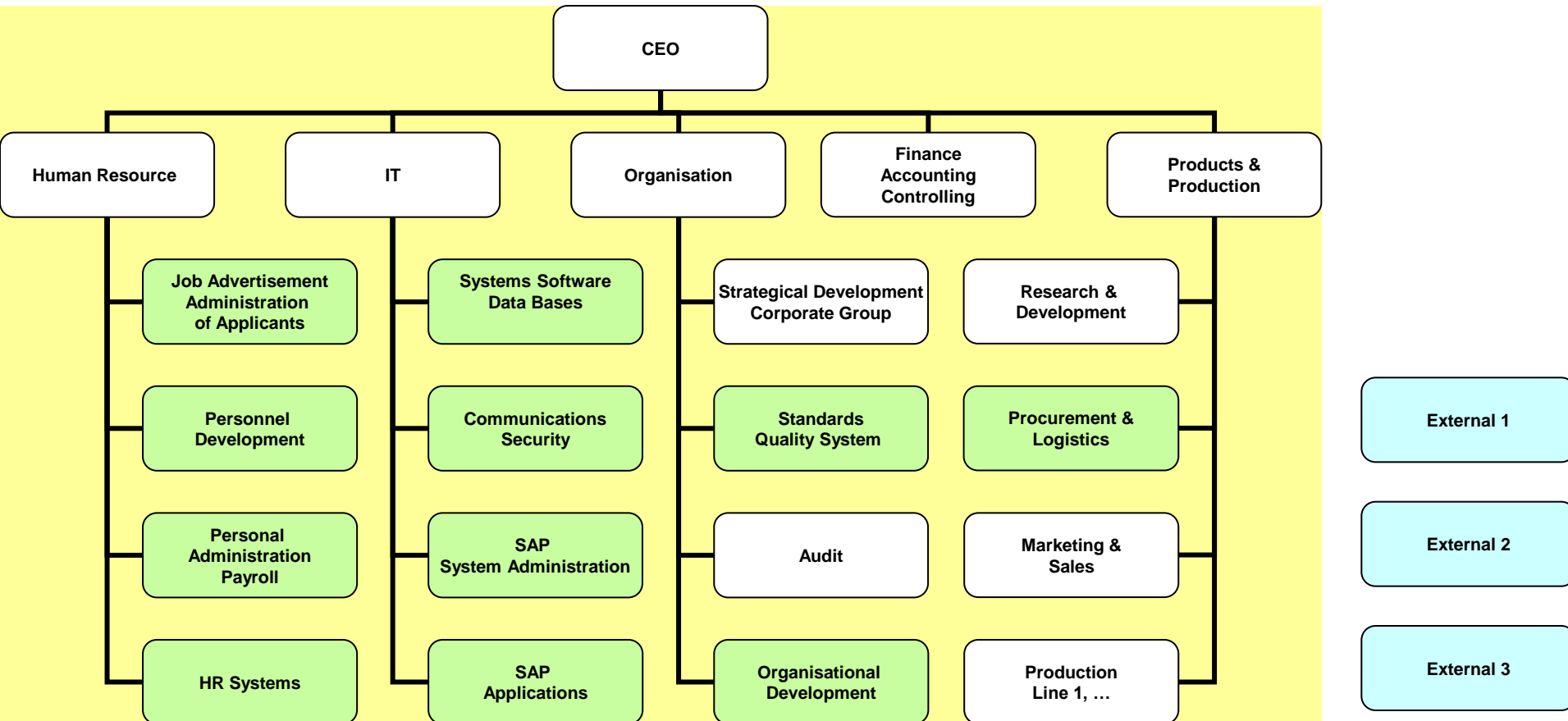
Core crew for the implementation of SAP HR Applications

Company ABC



Extended crew for the implementation of SAP HR Applications

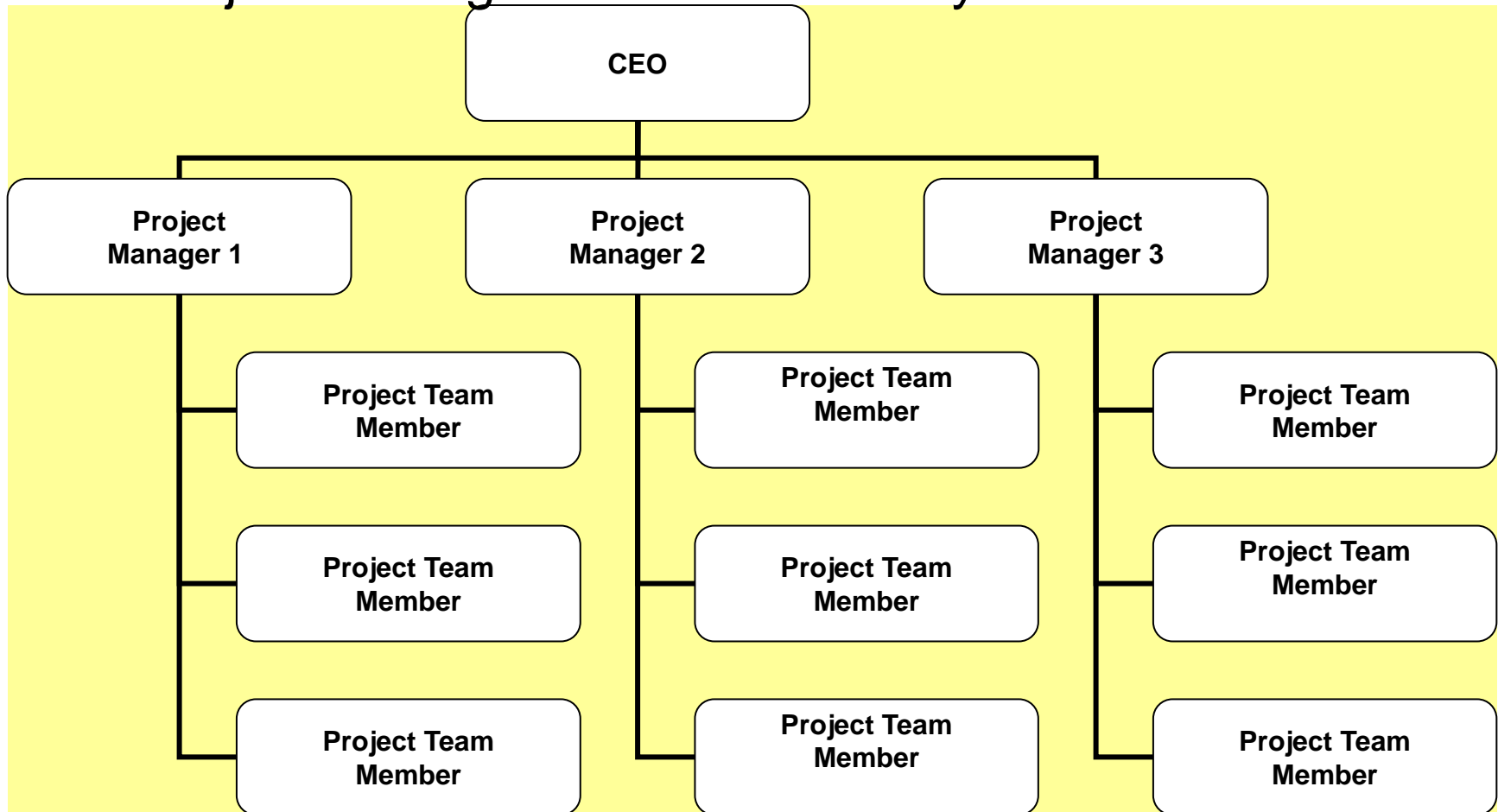
Company ABC



Extended crew for the implementation of SAP HR Applications

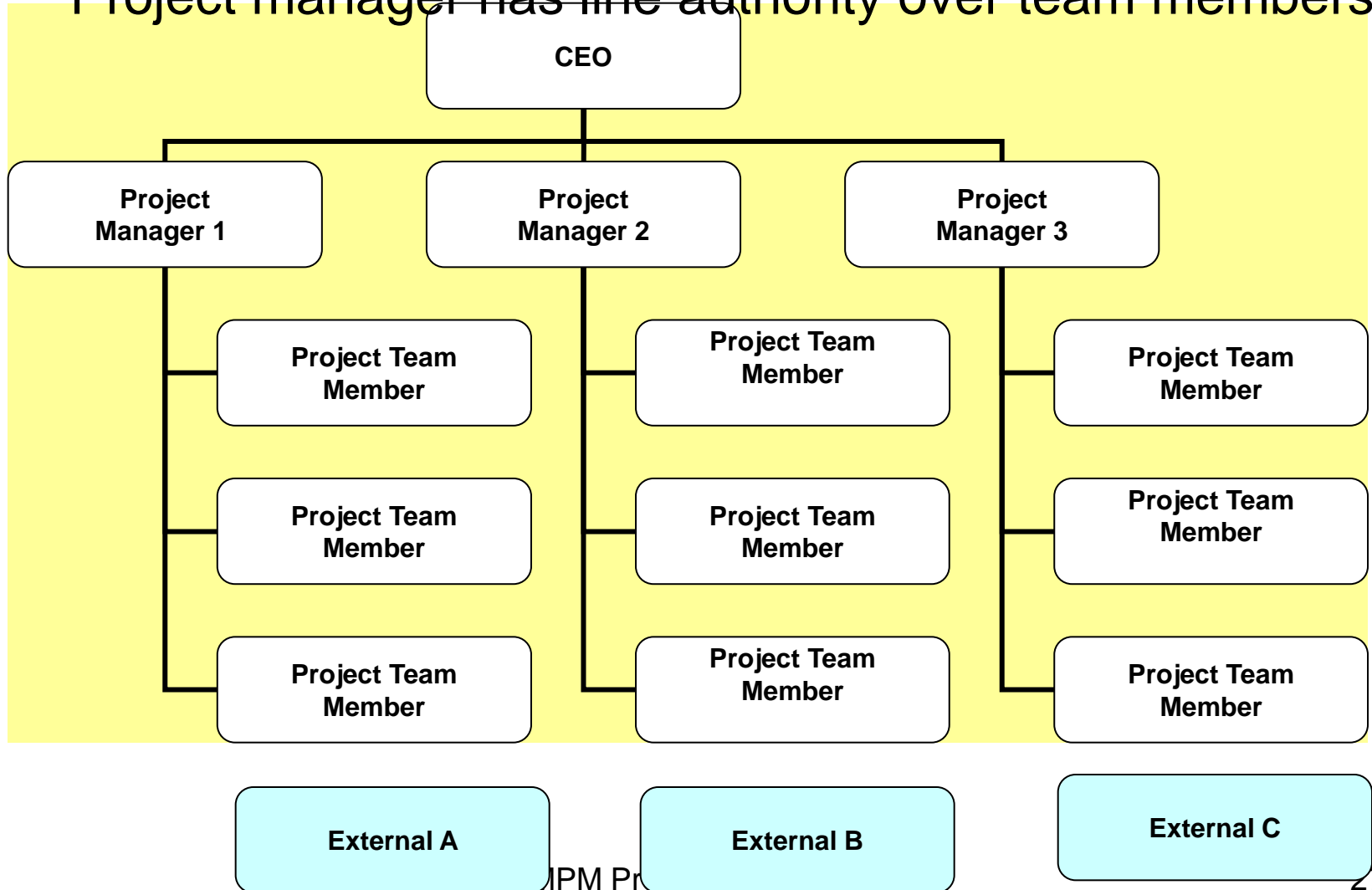
Projectized Company Structure

Project manager has line authority over team members

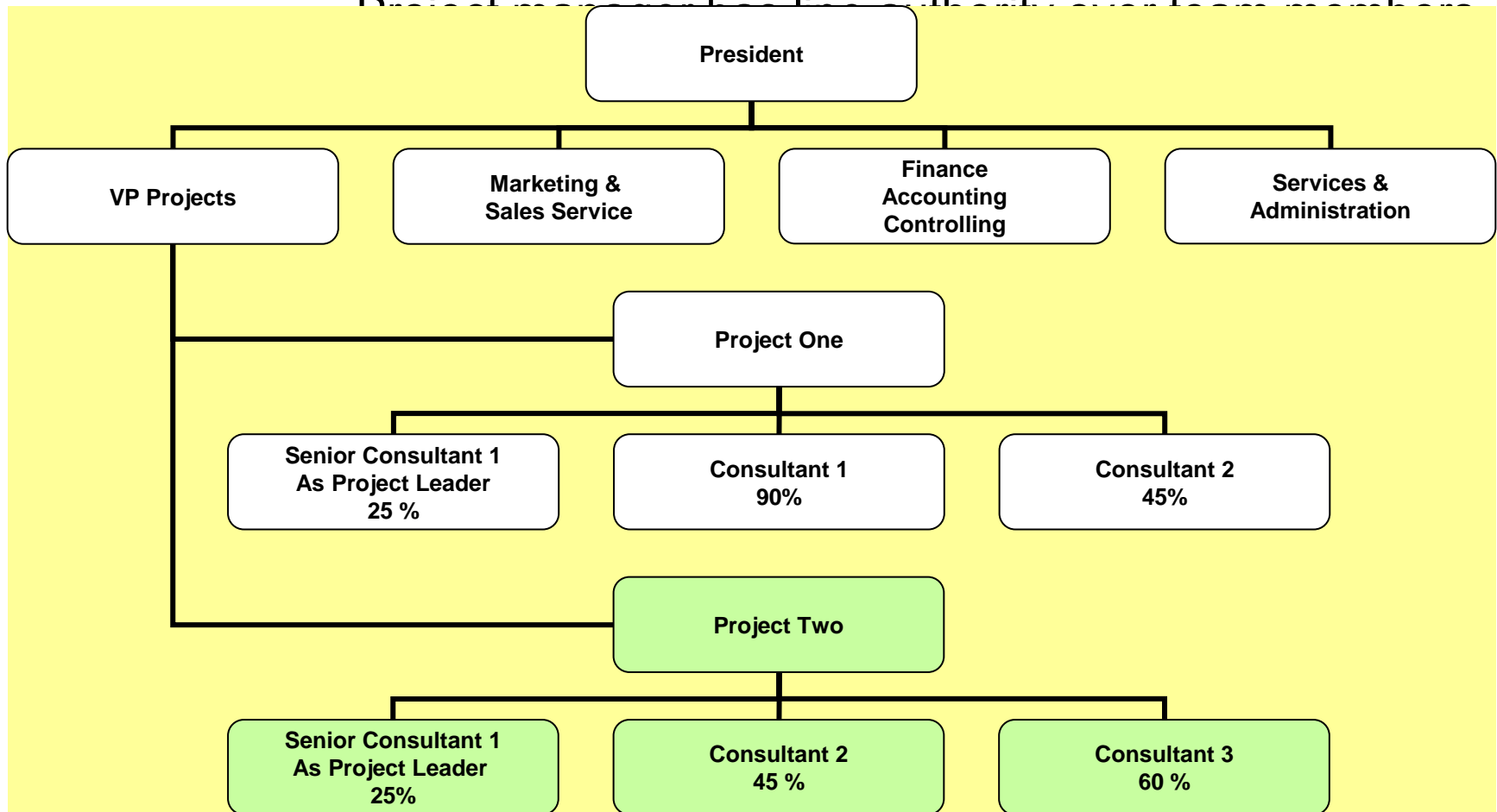


Projectized Company Structure

Project manager has line authority over team members

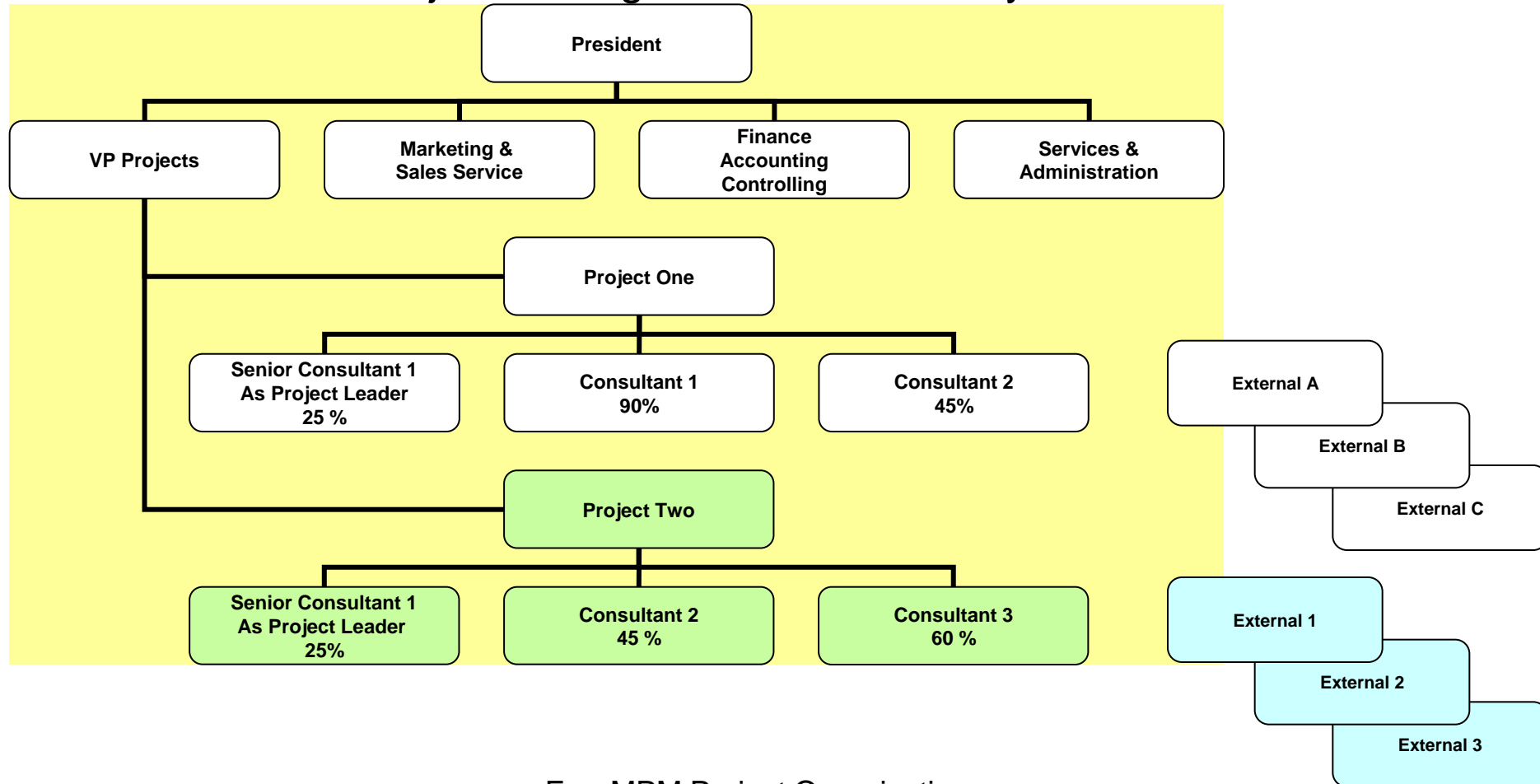


A Small Consulting Company



A Small Consulting Company

Project manager has line authority over team members



Company ABC – Partially Projectized Structure

Project manager has line authority over team members

